

MONTHLY MEMBERSHIP PROGRESS REPORT

District 33 N

Results as of: 3/31/2026

GMT:

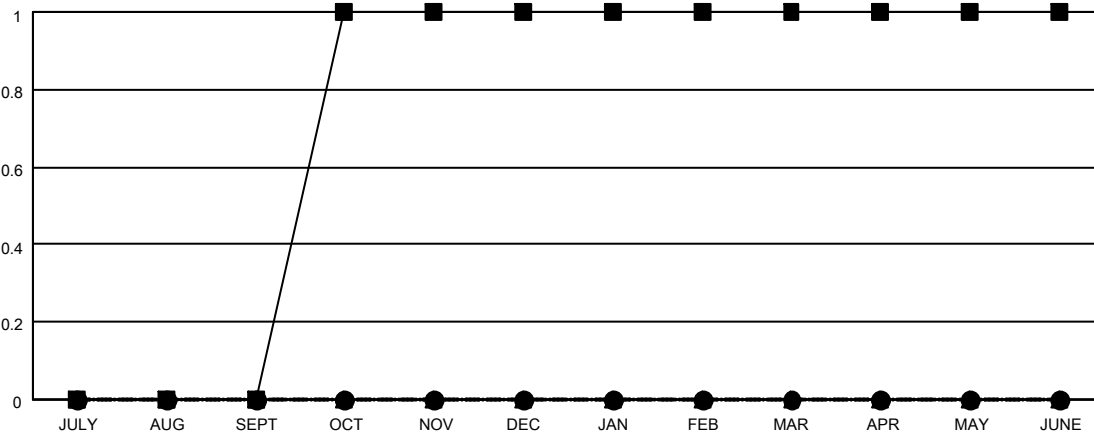
LOCATION MASSACHUSETTS

GMT CA

Clubs			
RESULTS FOR 2025-2026			
QUARTER	NEW CLUB GOAL	NEW CLUBS	DROPPED CLUBS
JULY/AUG/SEPT	0	0	0
OCT/NOV/DEC	1	0	0
JAN/FEB/MAR	0	0	0
APR/MAY/JUNE	0	0	0

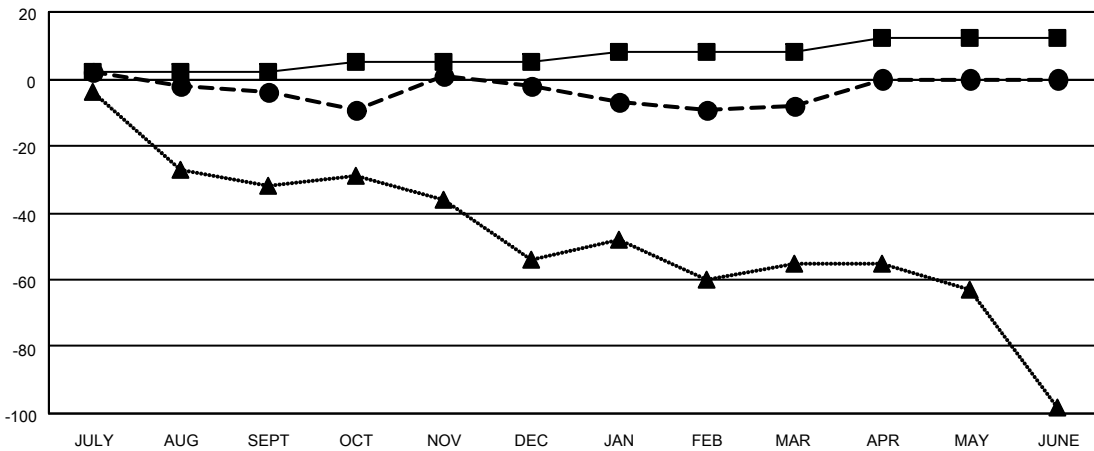
Members			
RESULTS FOR 2025-2026			
QUARTER	MEMBER GROWTH NET GOAL	MEMBER GROWTH ACTUAL	DROPPED MEMBERS ACTUAL (including transfers)
JULY/AUG/SEPT	2	19	21
OCT/NOV/DEC	3	26	21
JAN/FEB/MAR	3	19	19
APR/MAY/JUNE	4	0	0

GOALS AND ACTUAL NEW CLUBS CUMULATIVE



- - CURRENT YEAR GOALS FOR NEW CLUBS
- - CURRENT YEAR ACTUAL NEW CLUBS
- ▲ - LAST YEAR ACTUAL NEW CLUBS

GOALS AND ACTUAL MEMBERS CUMULATIVE



- - MEMBER GROWTH NET GOAL
- - MEMBER GROWTH ACTUAL
- ▲ - LAST YEAR MEMBERSHIP ACTUAL

DROPPED CLUBS: 0	18 CLUBS OF 37 ADDED 1 OR MORE NEW MEMBERS	GENDER DISTRIBUTION
		MALE 587 (57.55%)
		FEMALE 433 (42.45%)
DROPPED MEMBERS	CLICK HERE FOR CUMULATIVE MEMBERSHIP DATA	TOTAL FAMILY UNIT MEMBERS 137
DECEASED 18		FAMILY MEMBERS PAYING HALF DUES 71
CLUB CANCELLED 0		
OTHER 43		
TOTAL 61		